

An Ergonomic Approach for Improvement of a Passenger Car Interior Design

* , * , * , * ,
* † , * , * **
* , * , * , *

* , ** , †

Abstract

, recreation vehicle(RV)
가
가
가

Key word: Kansei engineering, passenger car interior

1.

2.

가 , parts catalog

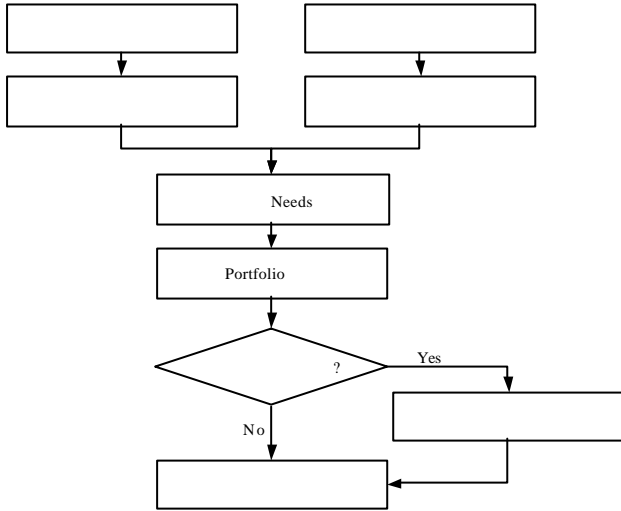
(Nagamachi, 2002)

가 needs
가 needs

(Jindo and Hirasago, 1997).

portfolio

1



1.

2.1

가

2.2

card sorting (bottom-up approach)

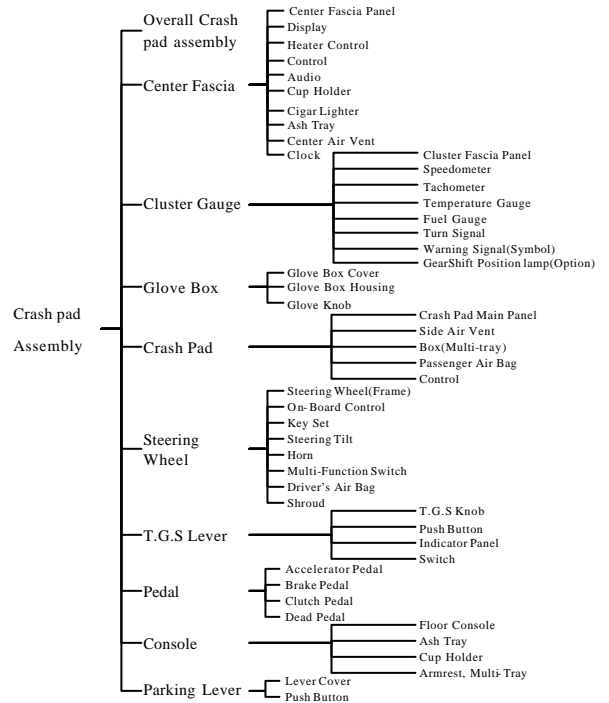
가

2.3

, Parts Catalog

가

seat
 . Group crash pad assembly,
 cabin room, luggage compartment, overall
 interior 4 22 assembly, 81 sub-
 part . 2 crash pad assembly
 group



2.

- Crash pad

assembly

2.4

가

가

4)

:

가

가

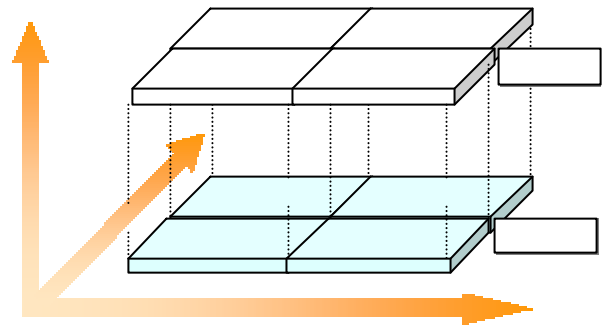
가

가

2.5

Needs

가 , 가 ,
가



3. Portfolio

2.6 Portfolio

Portfolio

needs가

3

2.7

가

가

, crash pad, center fascia ,
, heater control

1) :

가

2) :

가

3) :

2.8

가

portfolio

가

6)

:

1

가

가

가 가

1.

3.

가

가

1)

:

가

2)

:

3)

:

가

4)

:

5)

:

[1] Nagamach M., Kansei engineering as a powerful consumer-oriented technology for product development, Applied Ergonomics, Vol. 33, pp289-294, 2002.

[2] Jindo, T., and Hirasago, K., Application studies to car interior of Kansei engineering, International Journal of Industrial Ergonomics, Vol. 19, pp105-114, 1997.